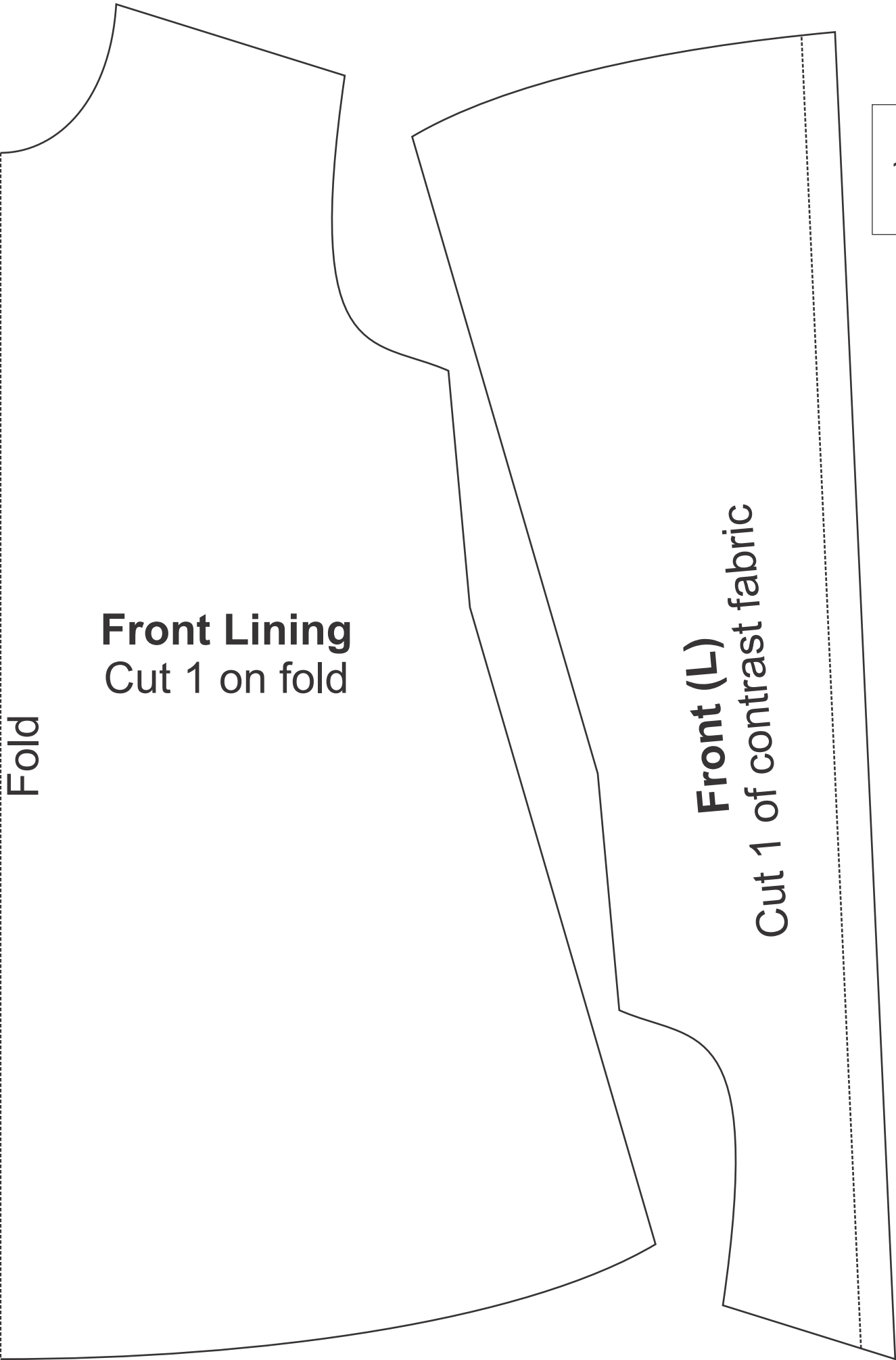


Fold

Front Lining
Cut 1 on fold

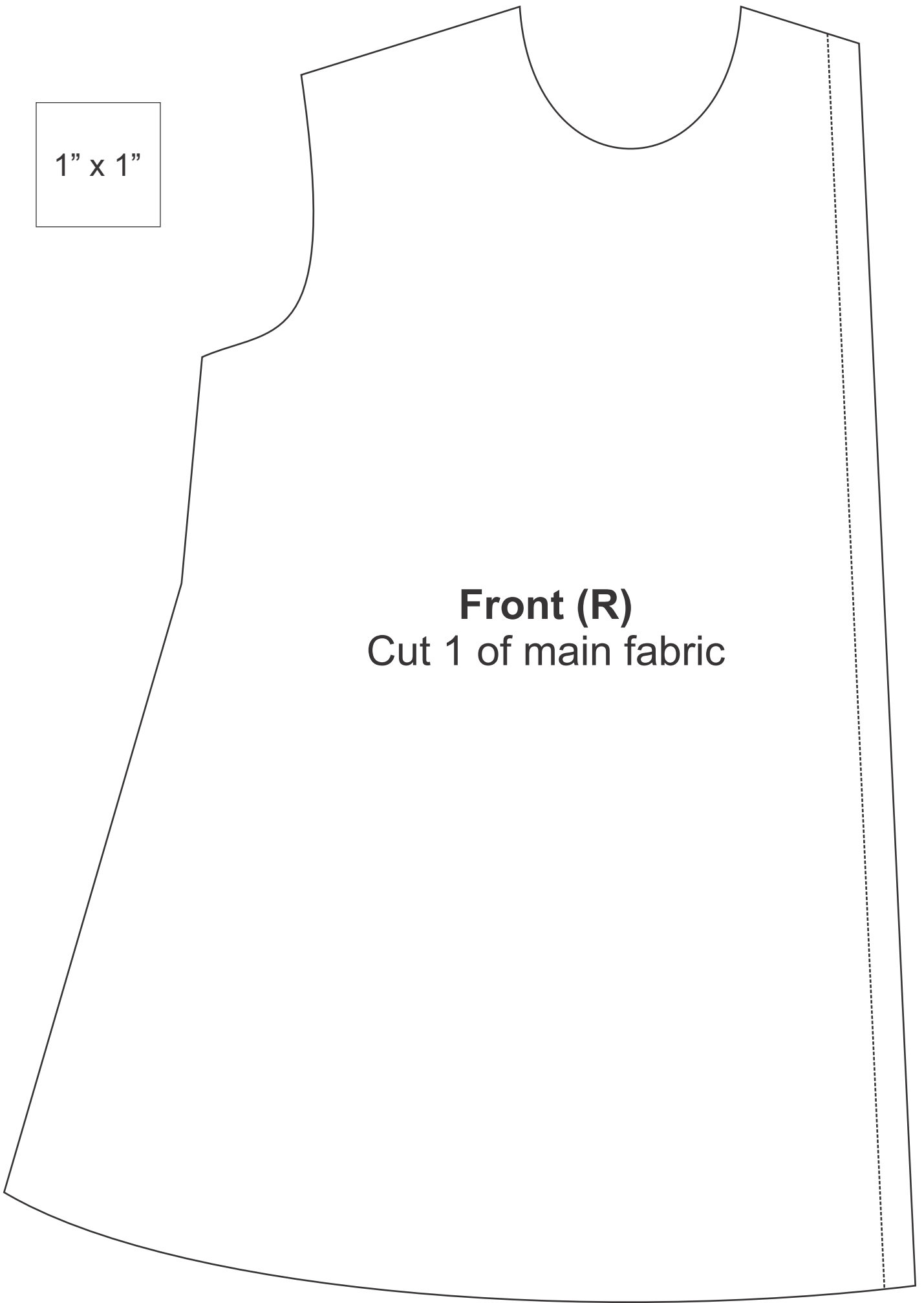
Front (L)
Cut 1 of contrast fabric

1" x 1"

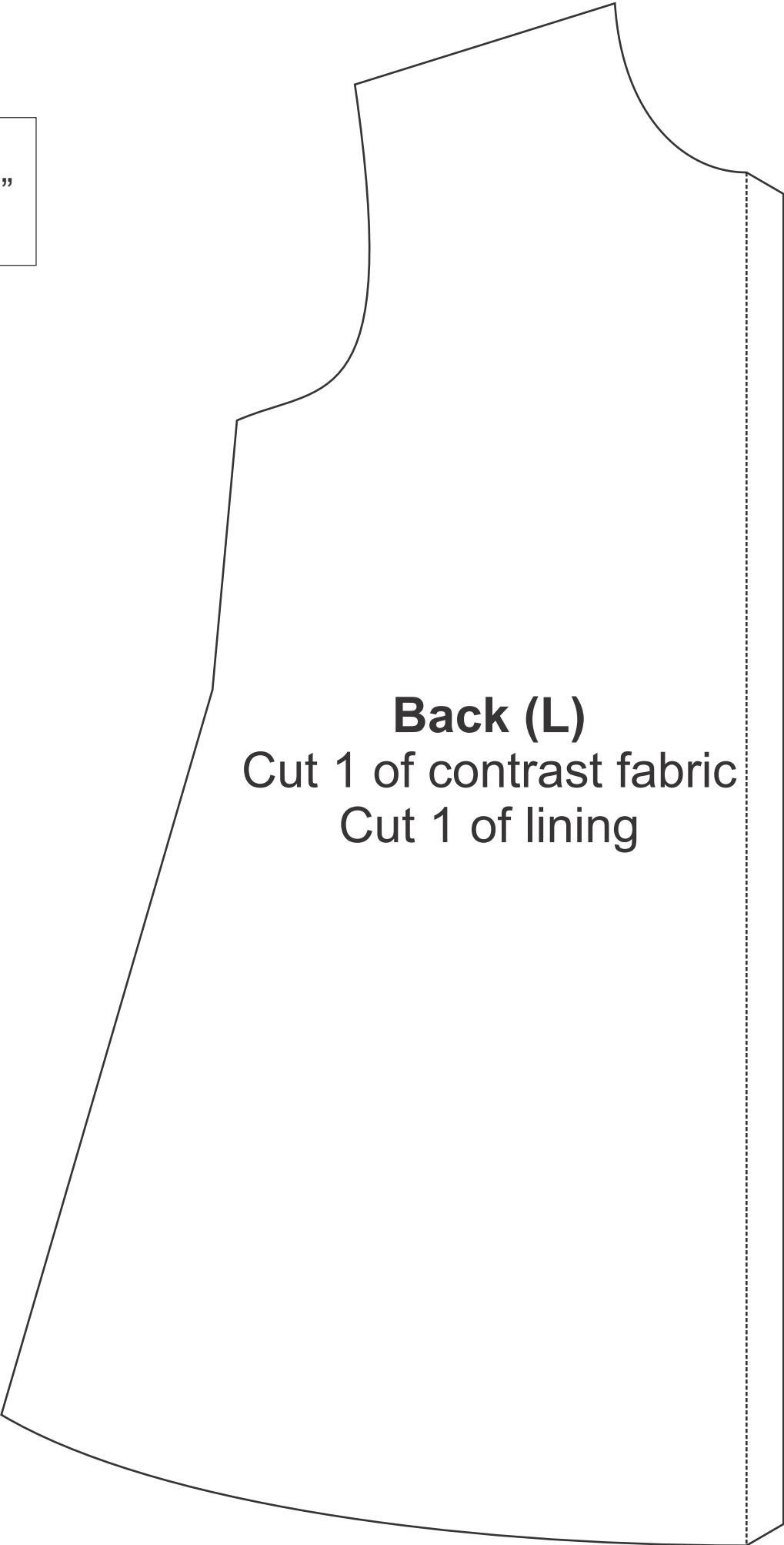


1" x 1"

Front (R)
Cut 1 of main fabric



1" x 1"



Back (L)
Cut 1 of contrast fabric
Cut 1 of lining

1" x 1"

Back (R)
Cut 1 of main fabric
Cut 1 of lining

